

# Midlands Office

Bennetts Place, 30-31 High Street,  
Market Harborough, Leicestershire LE16 7NL

## Directions from the M1 (northbound or southbound)

Leave the M1 at junction 20 signposted for A4304 to Market Harborough. Follow the road for approximately 12 miles through the villages of Walcote, North Kilworth, Husbands Bosworth, Theddingworth and Lubenham before entering the town. As you near the end of Coventry Road you will come to a small roundabout with a petrol filling station opposite. Turn left into Fairfield Road and follow the road sharp right, sharp left and sharp right again onto Abbey Street. At the end of the road turn left into High Street - Bennetts Place is approximately 50m on the left hand side.

## Directions from M6 (southbound)

At the end of the M6 take the M1 northbound and follow the instructions above; alternatively, take the A14 eastbound and follow the instructions below.

## Directions from the A14 - eastbound

Exit the A14 at the junction signposted for the A508 to Market Harborough. Follow the A508 north for approximately 5 miles through the villages of Kelmarsh and Great Oxendon. As you near the town continue along the A508 through traffic lights at the junction of Welland Park Road (on left) and Springfield Street (right), then past the bus station on the right. At the main traffic lights in the town centre continue straight ahead onto the High Steet, passing Abbey Street on your left (no entry sign). Bennetts Place is located approximately 50m past Abbey Street on the left hand side.

## Directions from the A14 - westbound

Exit the A14 at the junction signposted for the A6 to Market Harborough. Follow the road for approximately 6 miles passing over 2 roundabouts. Approximately 2 miles after the second roundabout turn left into Kettering Road and follow the road down the hill into Market Harborough town. At the bottom of Kettering Road pass under the railway bridge and turn left at the roundabout (opposite Sandcliffe Ford) into Springfield Street. At the end of Springfield Street turn right at the lights and continue past the bus station on the right. At the main traffic lights in the town centre continue straight ahead onto the High Steet, passing Abbey Street on the left (no entry sign). Bennetts Place is located approximately 50m past Abbey Street on the left hand side.

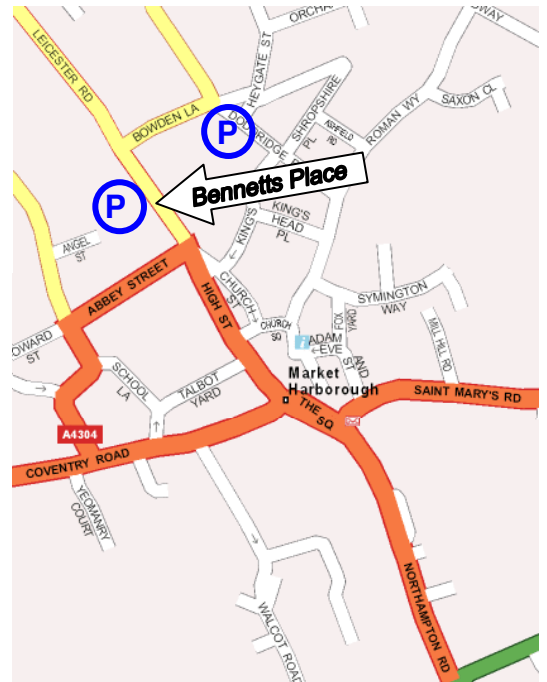
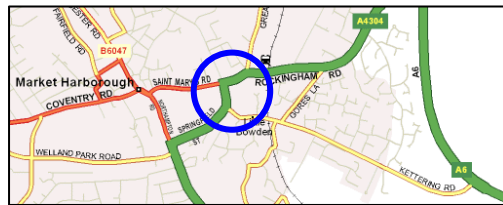
## Parking

There is some on street parking along the High Street limited to either 40 minutes and 2 hours during office hours (depending in which area you park). Alternatively there are several public pay and display car parks in the town, the closest to the office being located on Angel Street (off Fairfield Road) and on Bowden Lane (see map overleaf).

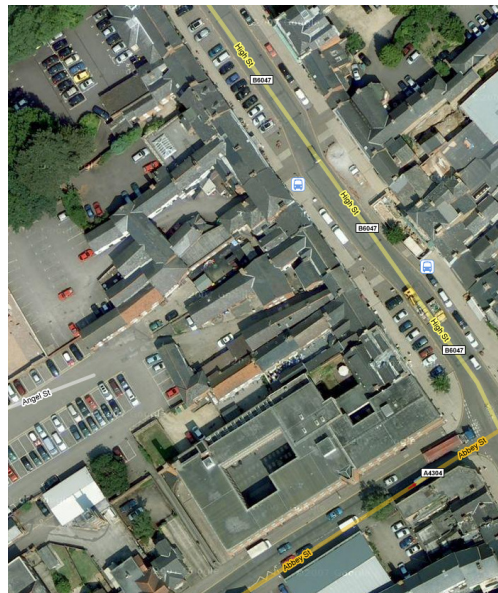
## By Rail

Market Harborough is served by the Midland Mainline from London St Pancras to Leicester, Nottingham, Derby, Sheffield and Leeds. The station is approximately 1 mile or a 15 minute walk from the office.

OFFICE LOCATIONS



On arrival at Bennetts Place please ring the bell alongside the main Imerja sign.



imerja OFFICES

**Northern Office**  
Hallmark House  
Paragon Business Park  
Chorley New Road  
Horwich, Bolton  
BL6 6HG

**Midlands Office**  
Bennetts Place  
30-31 High Street  
Market Harborough  
Leicestershire  
LE16 7NL

**Southern Office**  
Regent House  
Theobald Street  
Elstree  
Hertfordshire  
WD6 4RS



Tel: 0844 225 2888  
Fax: 0870 8611 489  
Email: info@imerja.com

[www.imerja.com](http://www.imerja.com)